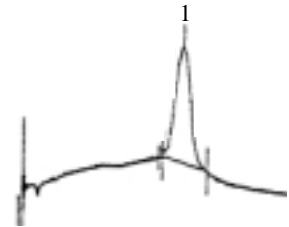


# Application Note

## Isopropyl Alcohol

Baseline - MOCON, Inc.™

1- Isopropyl Alcohol



Chromatogram

### Analysis

Detector: PID

Analysis Time: 90 sec

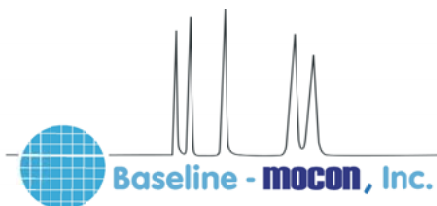
Column: Proprietary

Oven Temperature: 65°C

Carrier: Nitrogen, 45cc/min typical

Represented by:

*Baseline, the reference point  
from which all things are measured.*



19661 Highway 36, P.O. Box 649, Lyons, CO 80540  
In the continental United States, phone 800.321.4665, or fax 800.848.6464, toll free.  
Worldwide, phone 303.823.6661 or fax 303.823.5151  
• URL: [www.baselineindustries.com](http://www.baselineindustries.com) • E-mail: [sales@baselineindustries.com](mailto:sales@baselineindustries.com)